

APARTMENT – VERSION B

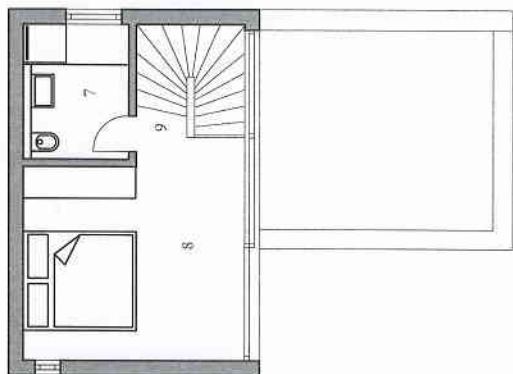
Entry from the northeast
Usable area including a terrace is 86,3 m²

Ground floor

1. vestibule 5,7 m²
2. dining room, kitchen 16,7 m²
3. living room 19,6 m²
4. toilet 1,5 m²
5. room 2,2 m²
6. terrace 12,5 m²

Attic floor

7. bathroom 5,5 m²
8. bedroom 17,5 m²
9. communication, stairway 4,8 m²



GROUND PLAN
OF THE ATTIC FLOOR, 28 m²



GROUND PLAN OF
THE GROUND FLOOR, 58,3 m²